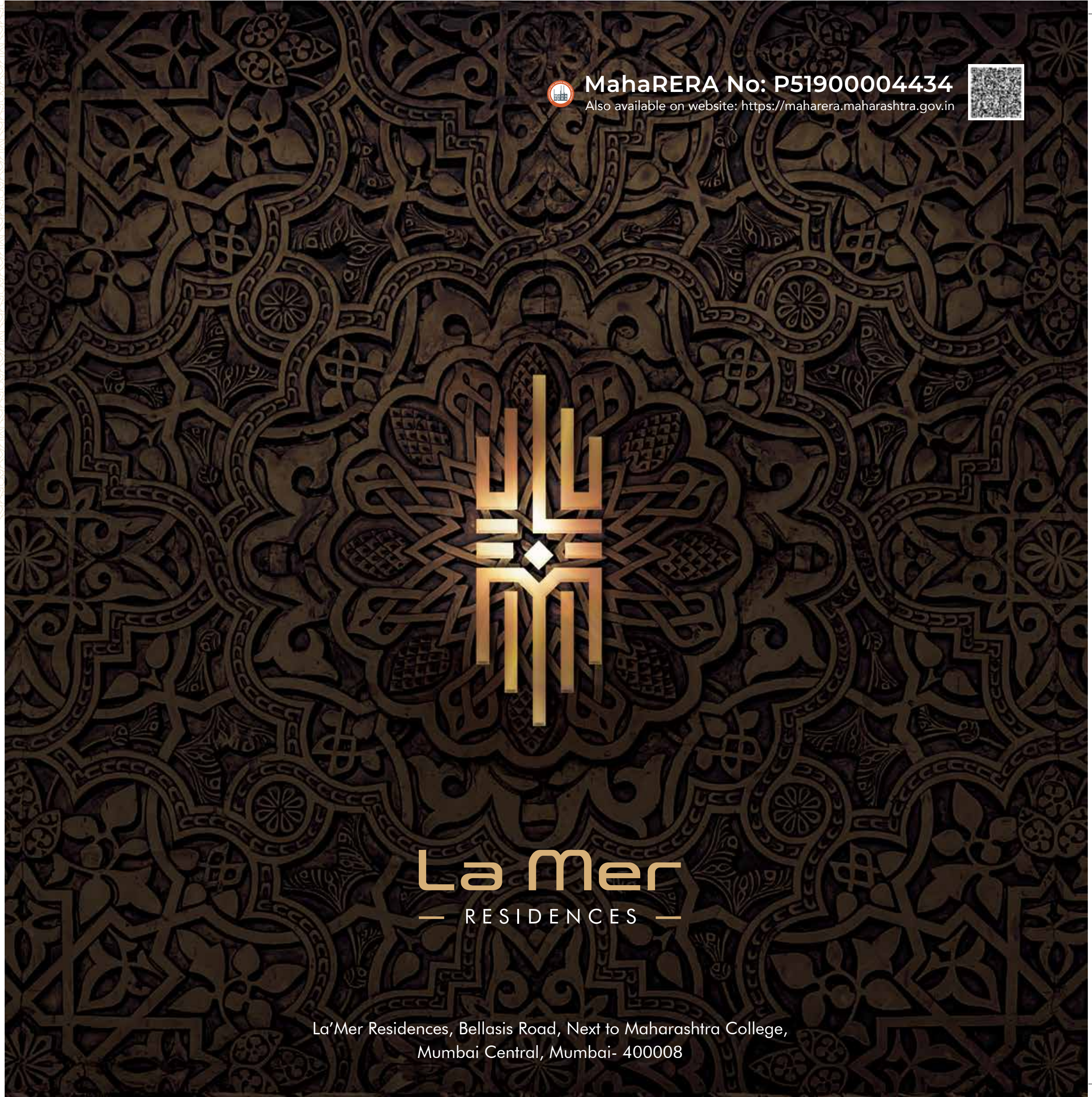




☎ 022 6970 9999 | info@lamer.net.in

La'Mer Residences, Bellasis Road, Next to Maharashtra College,  
Mumbai Central, Mumbai- 400008

MahaRERA No: P51900004434  
Also available on website: <https://maharera.maharashtra.gov.in>

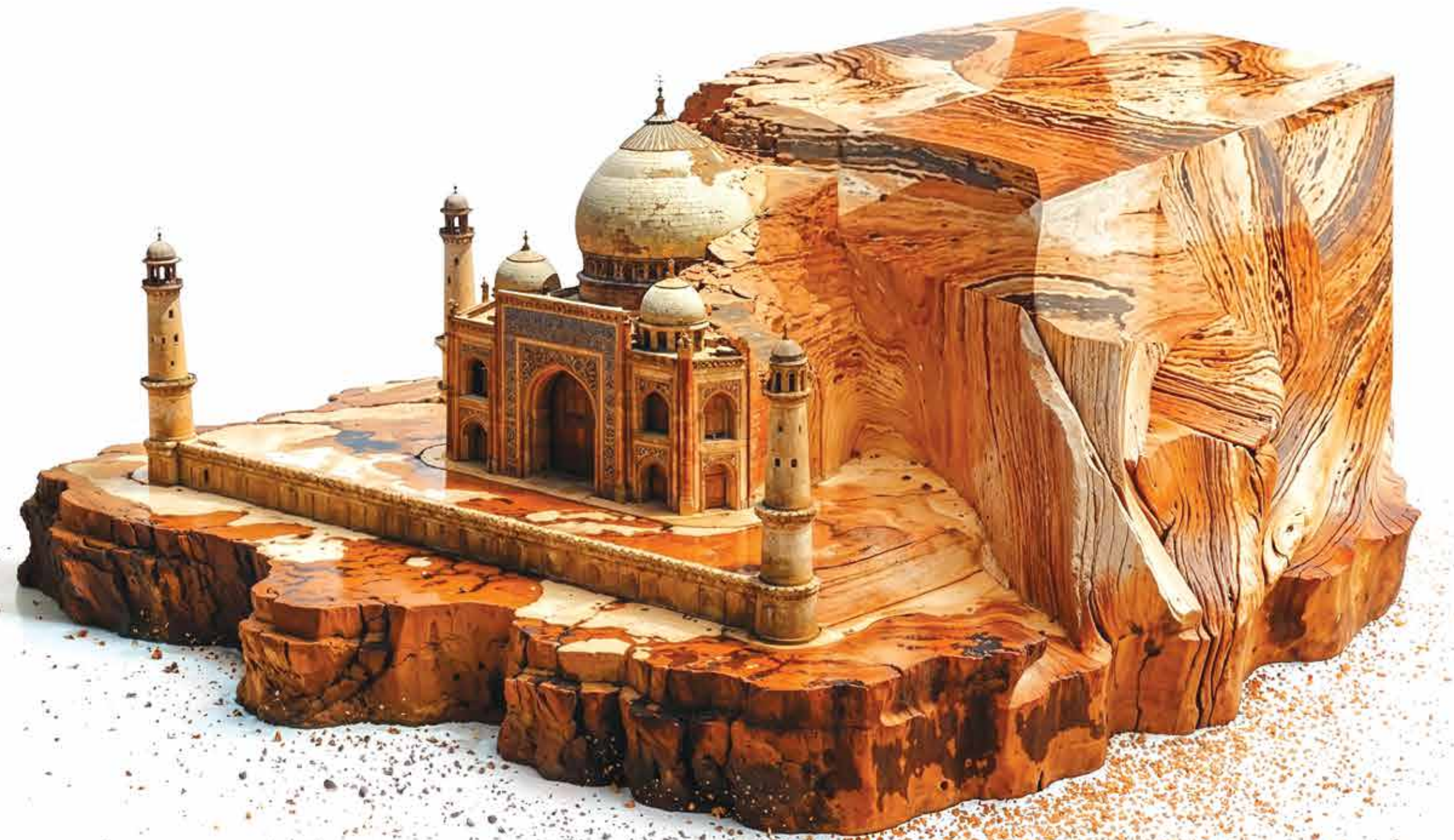


La'Mer Residences, Bellasis Road, Next to Maharashtra College,  
Mumbai Central, Mumbai- 400008

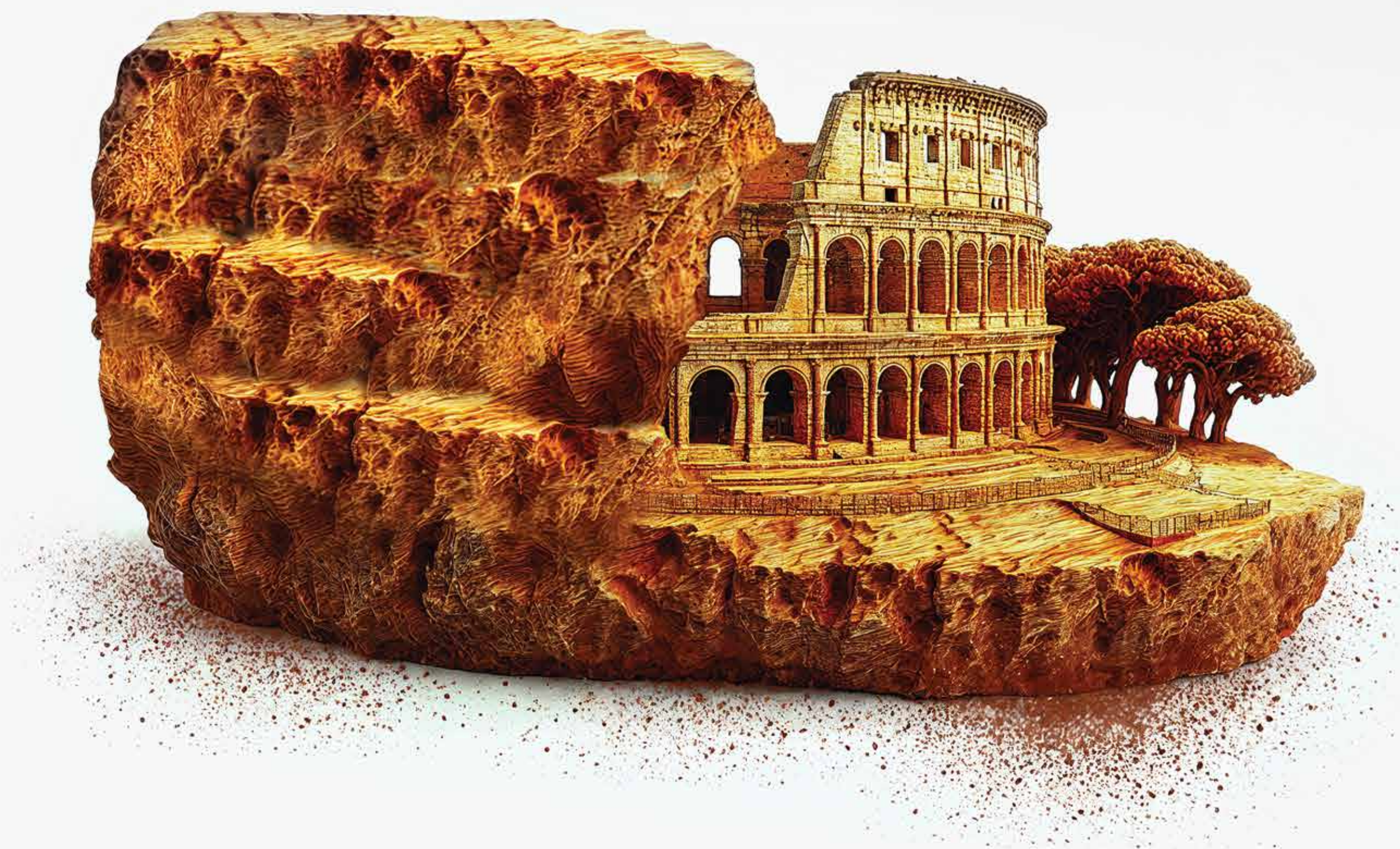


Some Landmarks  
Of The World  
Always Stay


TIMELESS







Some Landmarks  
Are Timeless  
Because Of Their

C  ASS





MUHAMMAD IRFAN FAZLANI GROUP



**MUHAMMED IRFAN FAZLANI**

Founder- Mifaz Realty

### **MIFAZ REALTY**

#### **A New Era of Luxury and Innovation**

Mifaz Realty, a venture initiated by Muhammad Irfan Fazlani, Asif Fazlani and Muhammad Imran Merchant carries forward a legacy steeped in excellence and credibility. While new to the real estate domain, the group brings an unmatched passion for innovation and an unshakable commitment to quality. Carving its niche yet again, they are here to introduce spaces that elevate daily living into extraordinary experiences. Their philosophy centers on merging cutting-edge technology with timeless design to create environments where residents thrive and grow.

Their debut project LA'MER RESIDENCES is more than just a statement of intent—it's a promise to redefine the meaning of luxury, comfort, and community in the heart of Mumbai city. By focusing on meticulous details and client-centric designs, Mifaz Realty is setting the stage for an inspiring new chapter in urban living.



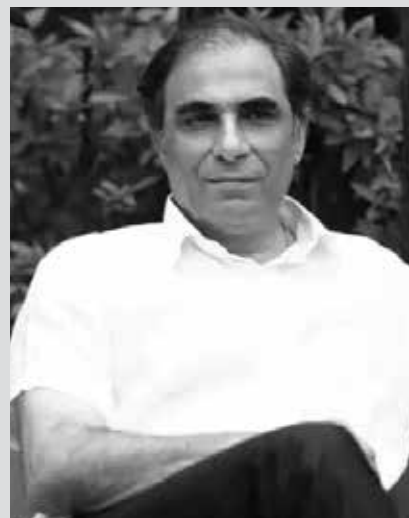
## CHUNAWALA GROUP

### Legacy built on Trust, Future Built on Vision

Entwined in a rich family legacy since the 1980s, Chunawala Group proudly presents LA'MER RESIDENCES, a testament to its unwavering passion and dedication. Under the visionary leadership of Faisal M. Chunawala, this architectural masterpiece transcends mere construction; it embodies a narrative of pride and perseverance. Every detail resonates with emotion, reflecting the enduring spirit of the Chunawala legacy. More than just a building, it stands as the epitome of dreams realized and aspirations fulfilled—a beacon of inspiration that encourages resilience through all of life's emotions.

In this remarkable creation, the Chunawala Group not only honors its past but also paves the way for future generations, ensuring that their legacy continues to inspire. LA'MER RESIDENCES is not just a residence; it is a celebration of life, ambition, and the relentless pursuit of excellence.





Hafeez Contractor

SHAPING

DEFINING

SKYLINES | DREAMS

Awarded the Padma Bhushan, Ar. Hafeez Contractor is India’s most celebrated architect, transforming urban landscapes with iconic designs. From The Imperial Towers in Mumbai, among India’s tallest buildings, to the revolutionary 23 Marina in Dubai, and the world-class DY Patil Stadium, his creations exemplify innovation and elegance.

Heading India’s largest architectural firm with over 550 professionals, Hafeez has reshaped cities through landmark projects, including the modernisation of Mumbai and New Delhi Airports. A visionary for vertical growth and sustainable cities.



Presenting One Such  
Classic Eternal Timeless  
Masterpiece



A **55** Storey  
Edifice Designed  
To Be The







---

From Hosting Soirées That  
Set New Social Benchmarks  
To Enjoying Tranquil Evenings  
Overlooking An Endless Horizon,

At La Mer, You Lead.  
And The World Takes Notice.

---





# TALK OF THE TOWN

55 STOREY  
TOWER

- Spacious 2 & 3 BHK Luxury Homes
- 24 Foot Height Royal Entrance Lobby
- 10 Mitsubishi Lifts & 3 Shuttle Lifts
- 9 Foot Height Service Floor
- Valet Service
- 11 levels of podium parking
- Dedicated Space for Prayer Room
- 12 Foot Height Habitable Floor
- Health And Lifestyle Amenities
- 24-Hour CCTV Surveillance
- 20 Foot Height Amenities Floor
- Lobby with dedicated concierge service





\*All distances and travel times are approximate, sourced from Google Maps, and are subject to change depending on traffic and road conditions.



# CONNECTIVITY

**FOR YOU TO BE IN THE  
HEART OF IT ALL**



# CONNECTIVITY

## HOSPITALS

- Wockhardt Hospital - **1.6 km**
- Masina Hosopital - **2.2 kms**
- Saifee Hospital - **2.6 kms**

## AIRPORTS

- Chhatrapati Shivaji Maharaj International Airport - **18.2 kms**

## SCHOOLS

- St. Anthony's Girls High School - **500 mtrs**
- Christ Church School - **1.2 km**
- Fazlani L'Academie Globale - **1.9 km**
- St. Mary's High School - **2.1 kms**

## GAS STATIONS

- HP - **2.9 kms**
- Indian Oil - **3.3 kms**

## MALLS

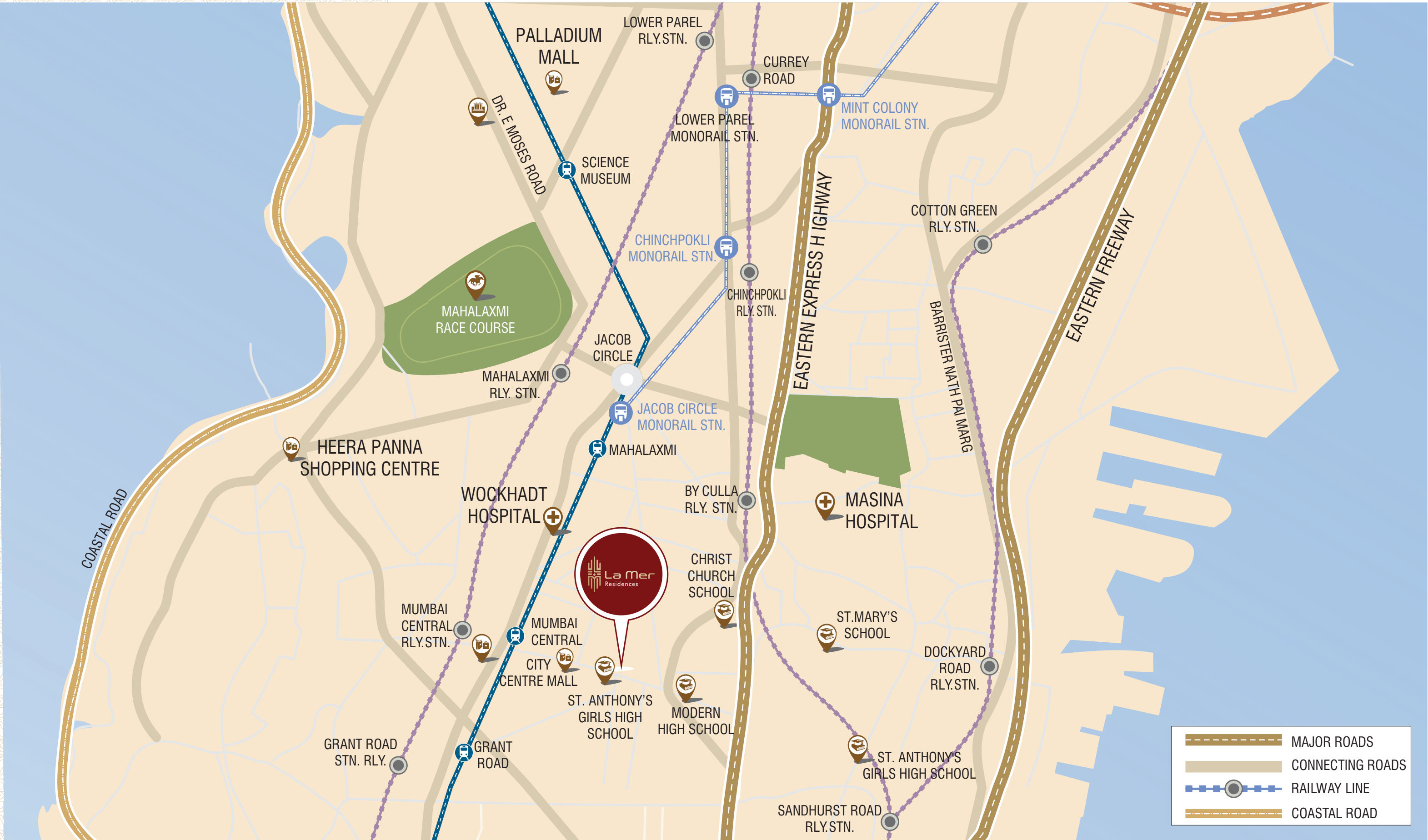
- City Centre - **350 mtrs**
- Reliance Super Mart - **700 mtrs**
- Phoenix Palladium - **4.1 kms**

## RAILWAY STATIONS

- Mumbai Central - **1.3 km**
- Byculla - **11 kms**

## OTHERS

- Marine Drive - **5 kms**
- Bandra Worli Sea Link - **6 kms**
- NSCI - **4.8 kms**
- Atal Setu (Mazgaon) - **14 kms**
- Eastern Freeway & Coastal Road (Haji Ali) - **15.6 kms**



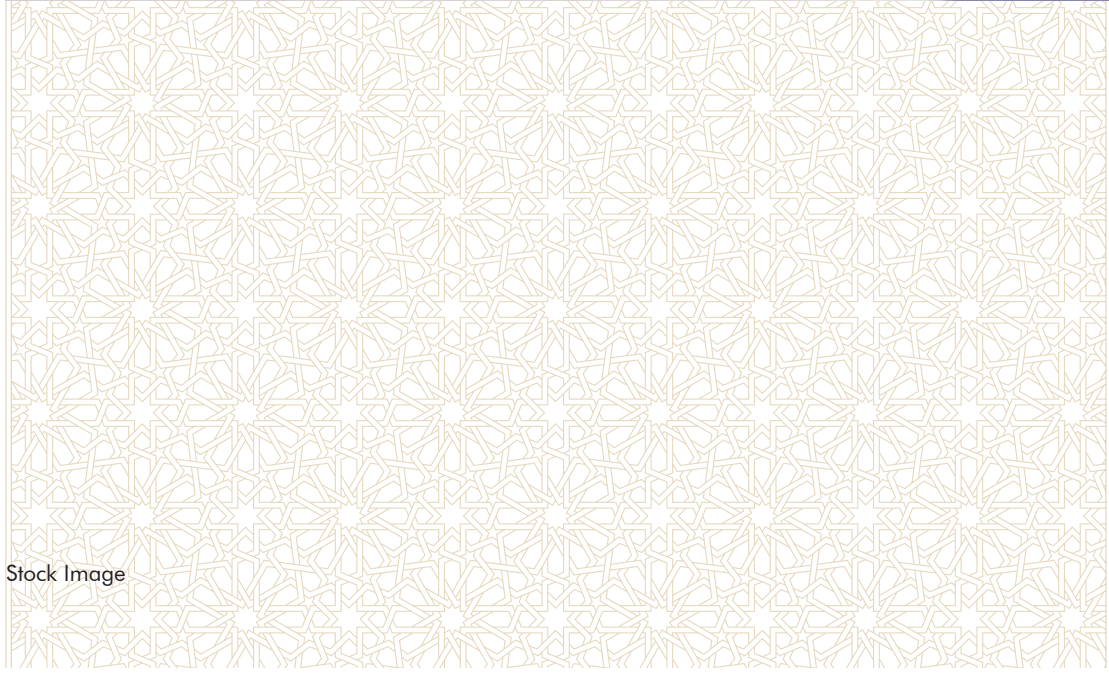
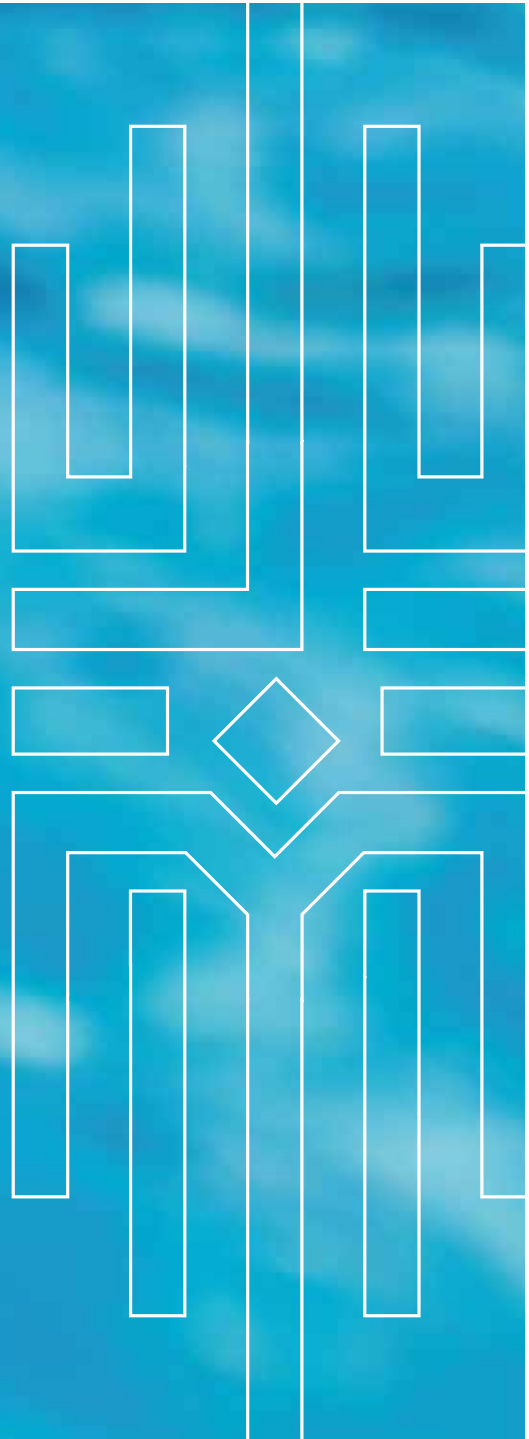
\*All distances and travel times are approximate, sourced from Google Maps, and are subject to change depending on traffic and road conditions.



Greatness arrives,  
the world watches in awe.  
Heads turn and  
destinies







LUXURIES & CONVENIENCE

---

**FOR YOUR HOME TO BE YOUR HAVEN.**



From dual fitness centers to serene gardens,  
La'Mer blends work, play, and relaxation seamlessly.

---



# LOBBY

---

## FOR THE GRAND ARRIVALS

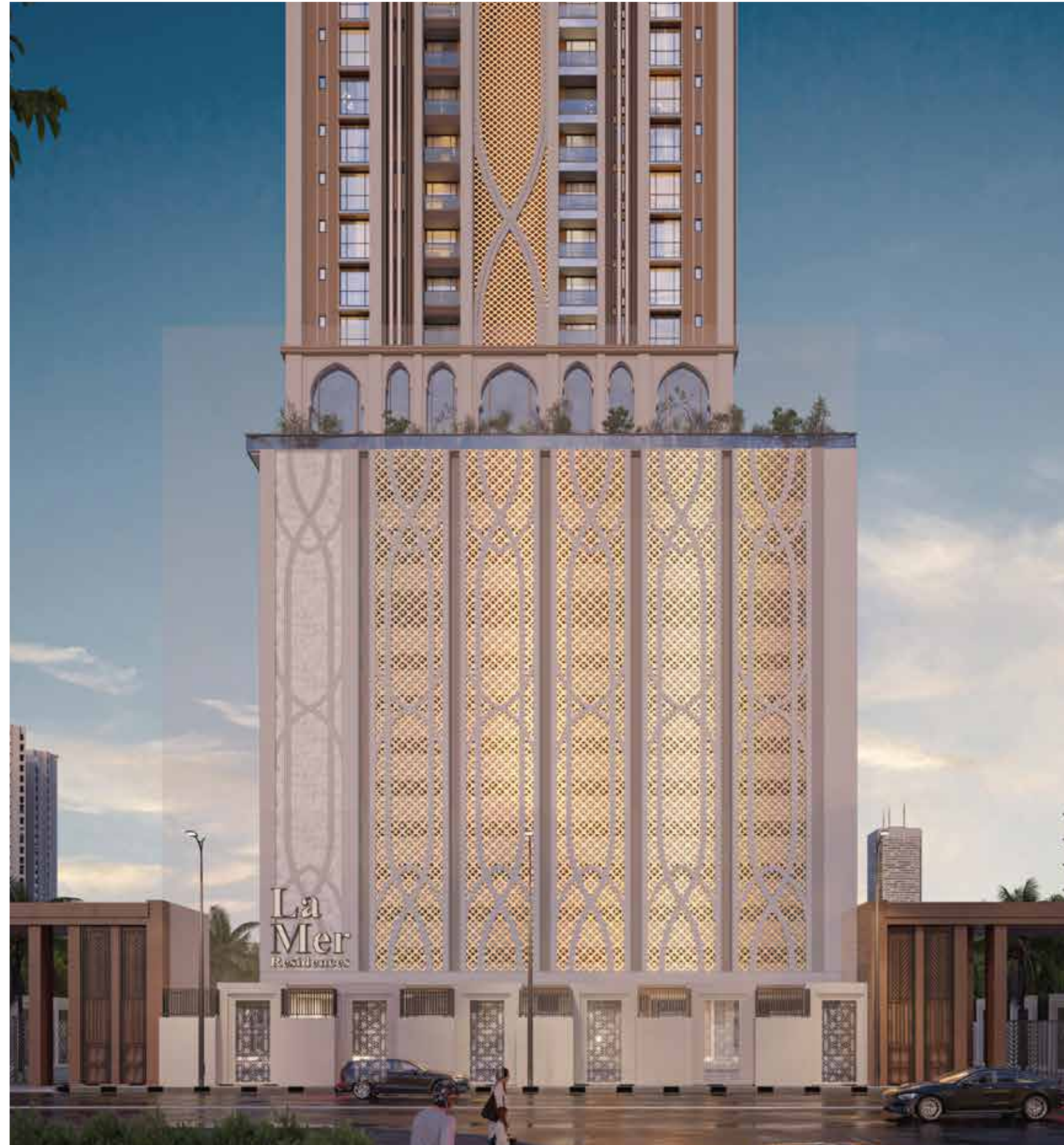


Step into a 24-ft-high grand lobby where elegance greets you at every corner, a statement of sophistication.



Artist's Impression





Where Every

 MOMENT

Spent Is Worth  
Treasuring



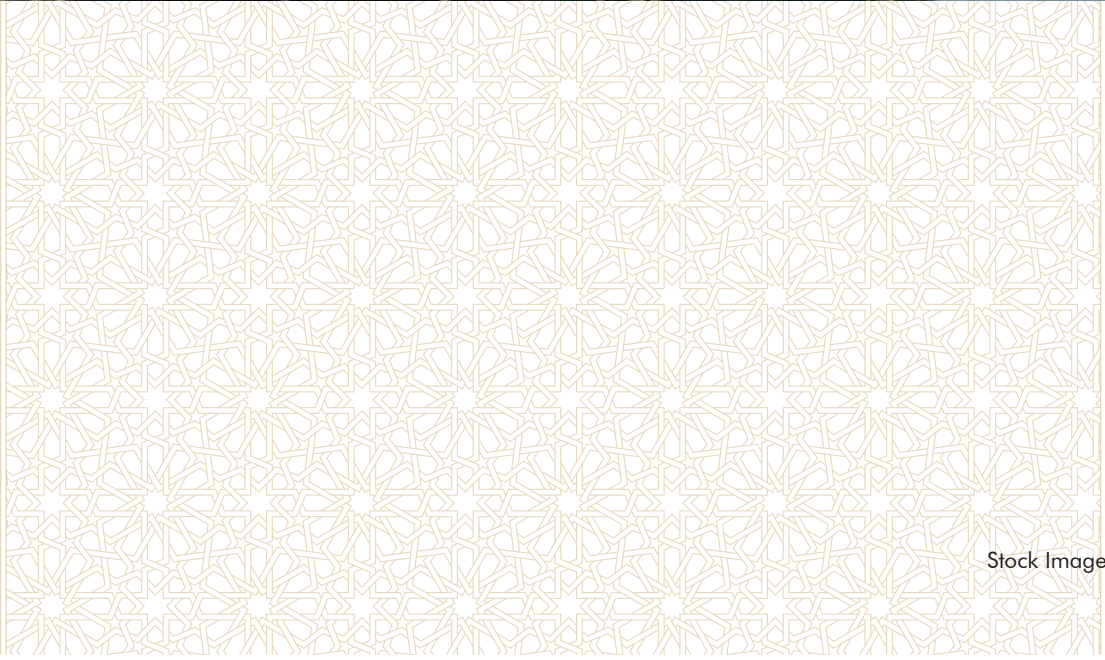


3516 SQ.FT.



Explore lush, themed gardens that offer serenity amidst the city's chaos.

GARDEN  
**FOR THE PEACE AND  
SOUL BALANCE**



Stock Image

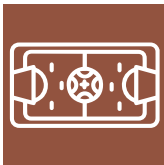




1690 SQ.FT.

# MULTIPURPOSE TURF

**BUILT FOR POWER PLAYERS.  
MADE FOR VICTORY**



A multi-purpose turf designed to sharpen  
your skills, because every move brings you  
closer to perfection.



## SWIMMING POOL FOR THE REJUVENATED MOMENTS



Immerse yourself in tranquility with a stunning pool designed for relaxation and rejuvenation.



1378 SQ.FT.

Artist's Impression





## FITNESS CENTRE

### FOR THE EVERY MOVE THAT MATTERS



With cutting-edge equipment and elite facilities,  
this is where fitness meets finesse.

Male Section 947 SQ.FT.  
Female Section 740 SQ.FT.



## YOGA ROOM

### FOR YOU TO ALIGN WITH YOUR ENERGY



A calming retreat to connect with your inner self amidst ambient surroundings.



947 SQ.FT.

Artist's Impression





1545 SQ.FT.



# PLAY AREA

**FOR THE SPACES OF  
LIMITLESS JOY**



A safe and vibrant space for  
children to explore, learn, and grow.



# MULTIPURPOSE HALL

**FOR YOU TO CELEBRATE  
LIFE, YOUR WAY**



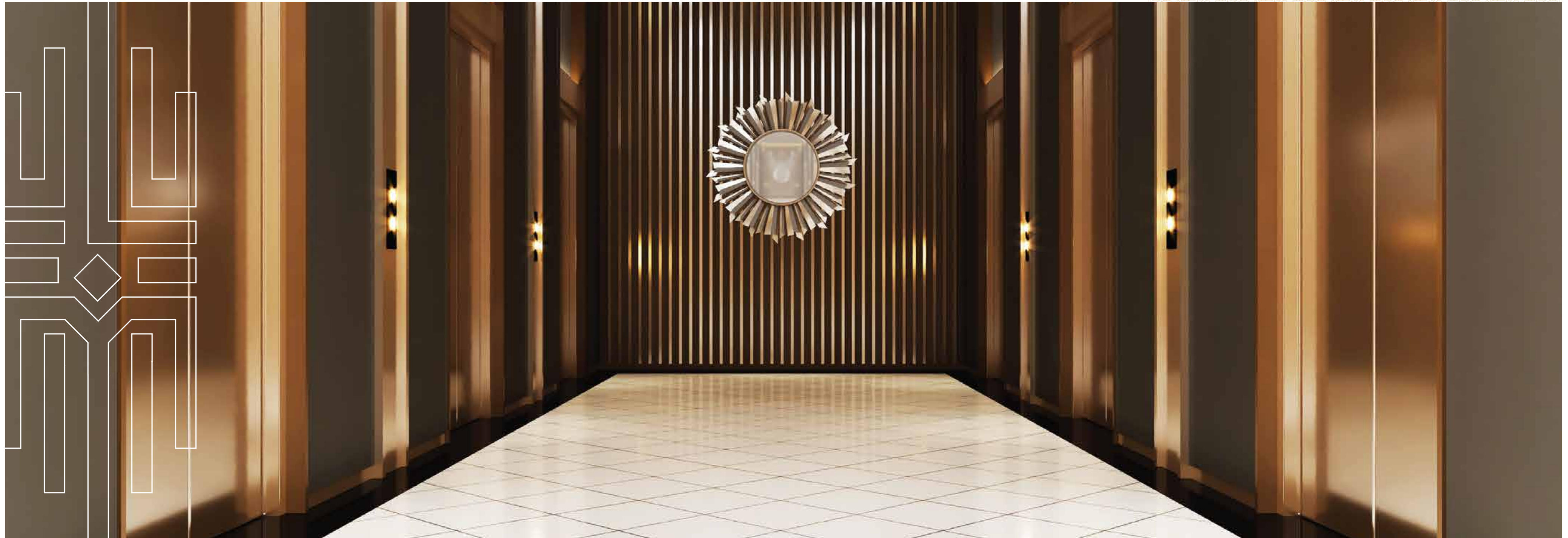
A versatile space tailored  
for every milestone, memory,  
and moment.



866.5 SQ.FT.

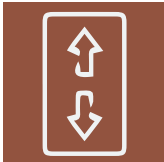
Artist's Impression





# ELEVATORS

**FOR THE ELEVATED  
LUXURY EXPERIENCE**



Experience seamless travel with high-tech Mitsubishi elevators—because every ride should feel exceptional.





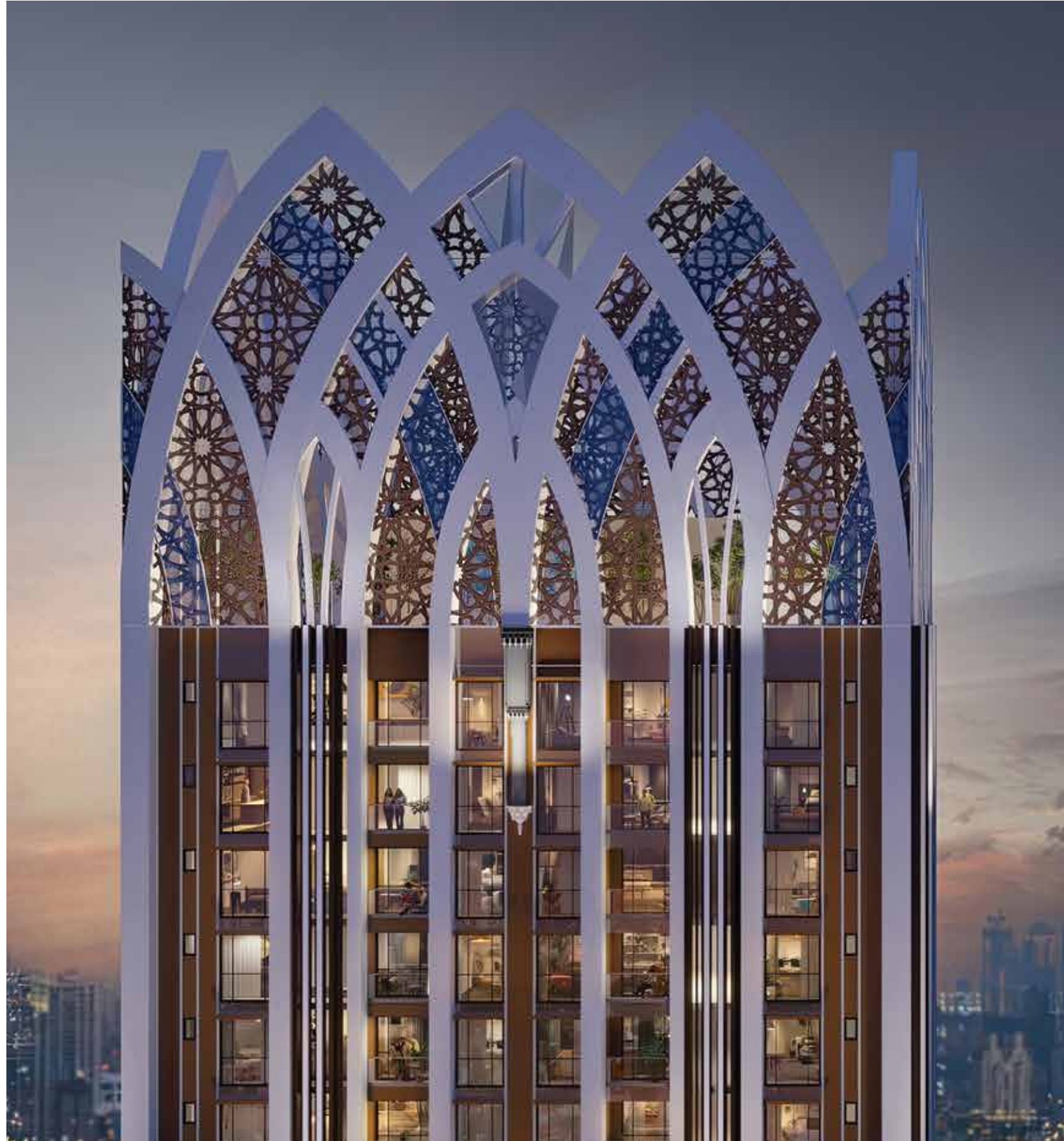
Stock Image

11 podium parking floors equipped with valet and round-the-clock security

PARKING  
FOR THE SPACES OF YOUR  
AUTOMOBILES







Artist's Impression

Your Moment  
Your Private Space  
Your

CROWN





Artist's Impression

## LIVING ROOM

### FOR YOUR UNFORGETTABLE MEMORIES



A Thoughtfully designed living room  
that blends comfort, style and warmth  
for everyday moments

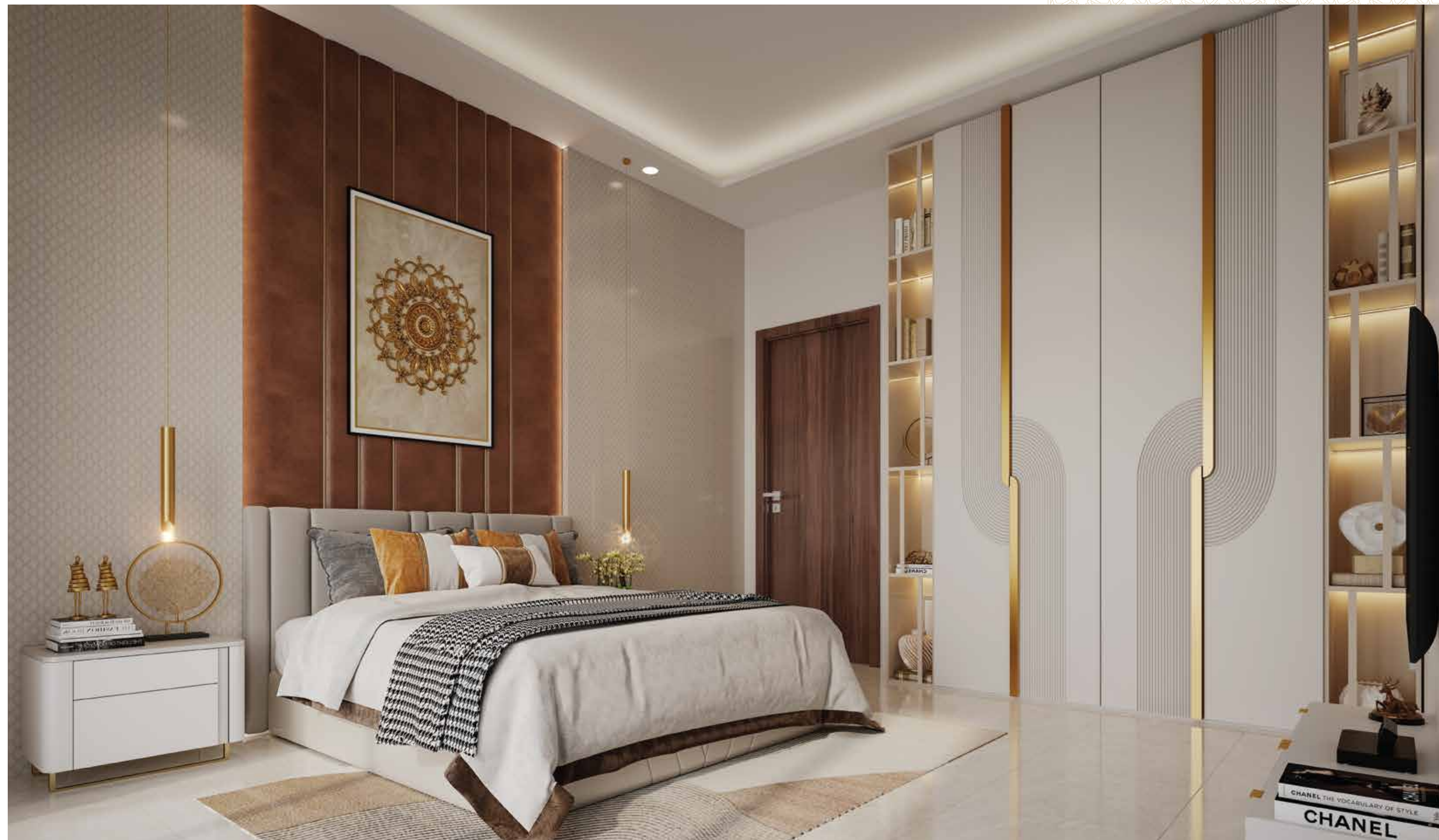


## 2 BHK RESIDENCES

**FOR YOUR OPULENT  
RELAXED SPACE**



Spacious layouts to accommodate  
your aspirations and create  
lasting memories.



Artist's Impression





Artist's Impression



3 BHK RESIDENCES  
**FOR THE DESIGNATION  
OF YOUR DREAMS**





## KIDS' BEDROOM

### FOR A WORLD FULL OF WONDER



Playful, creative, and functional—crafted for young minds to thrive.







## RESTROOM

### FOR A TOUCH OF REFINEMENT



Sophisticated designs and premium fittings  
redefine your everyday rituals.

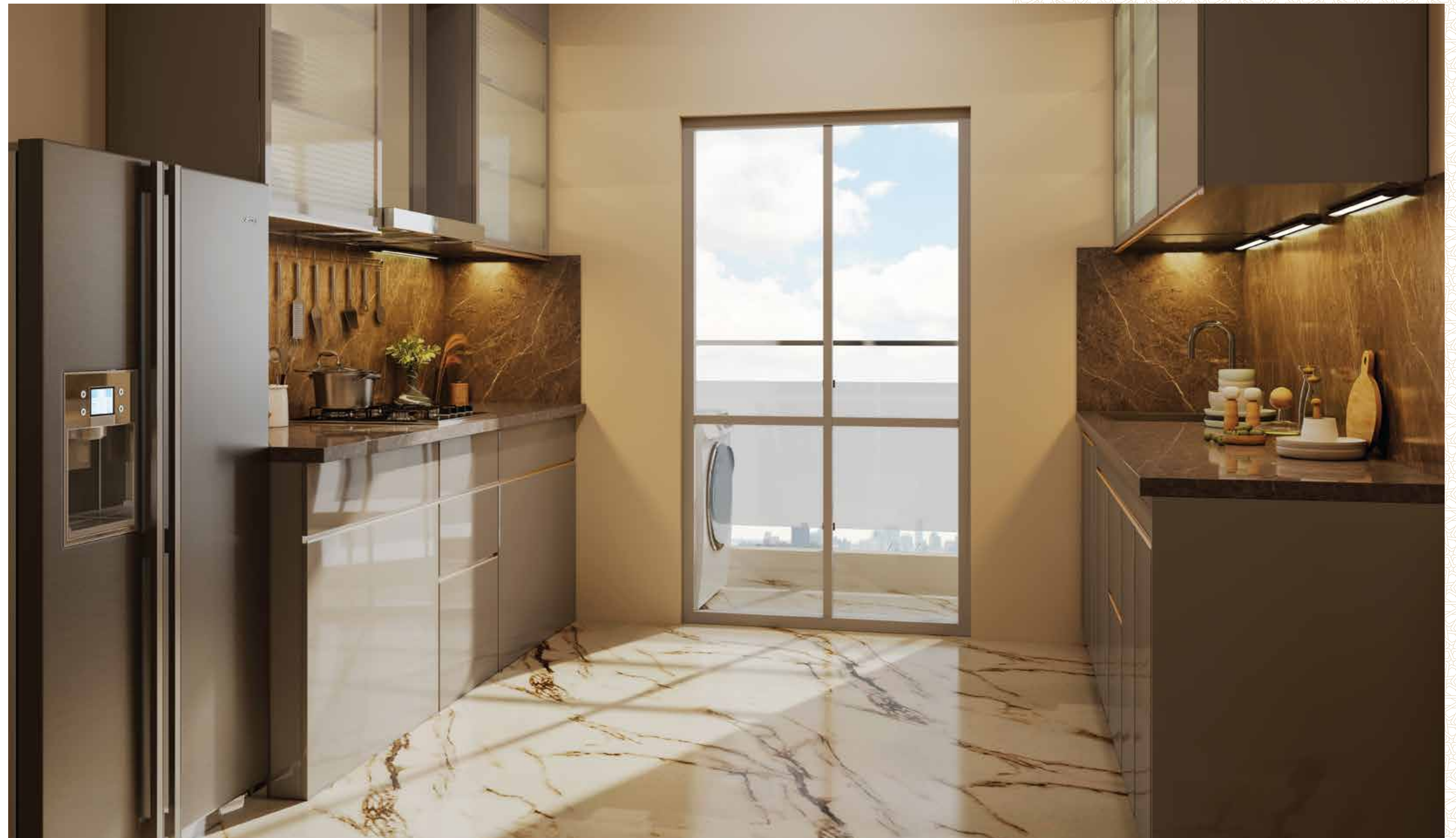


# KITCHEN

## FOR THE MASTER CHEF IN YOU



Thoughtfully designed modular kitchens for  
meals that feel like art.



Artist's Impression





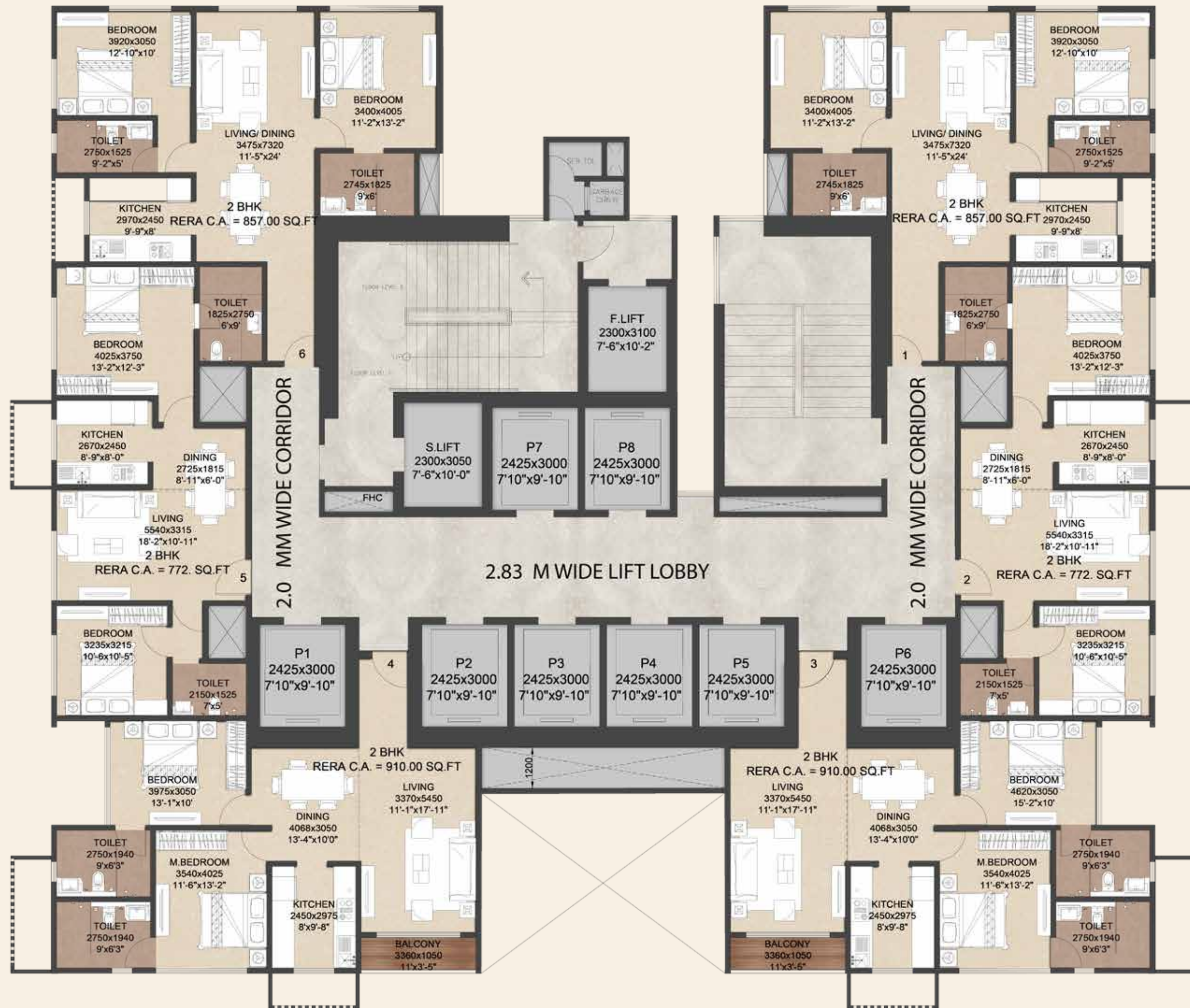
A Masterpiece  
Crafted For The Finest

FAMILIES









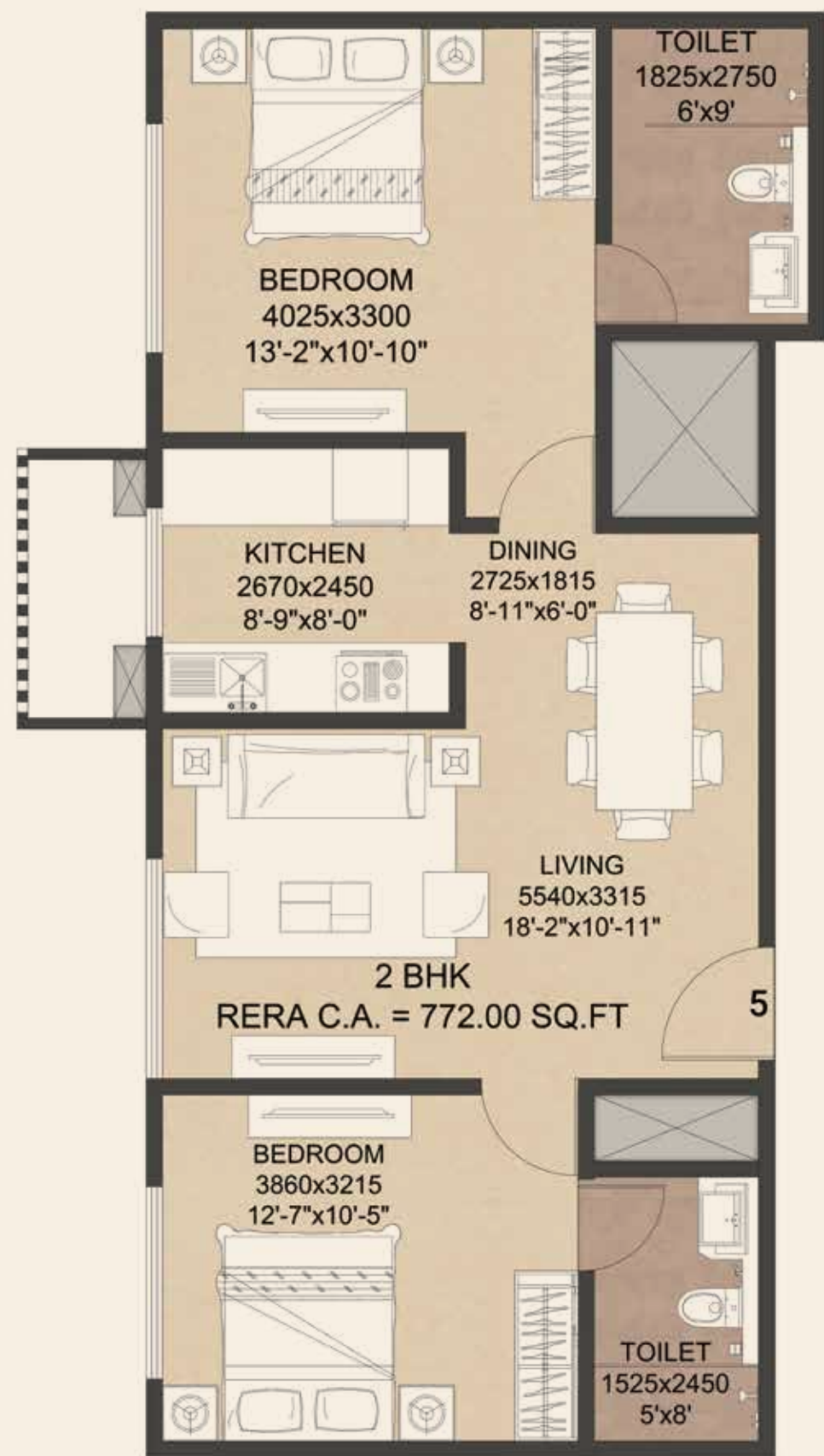
TYPICAL FLOOR PLAN





2BHK

772 SQ.FT

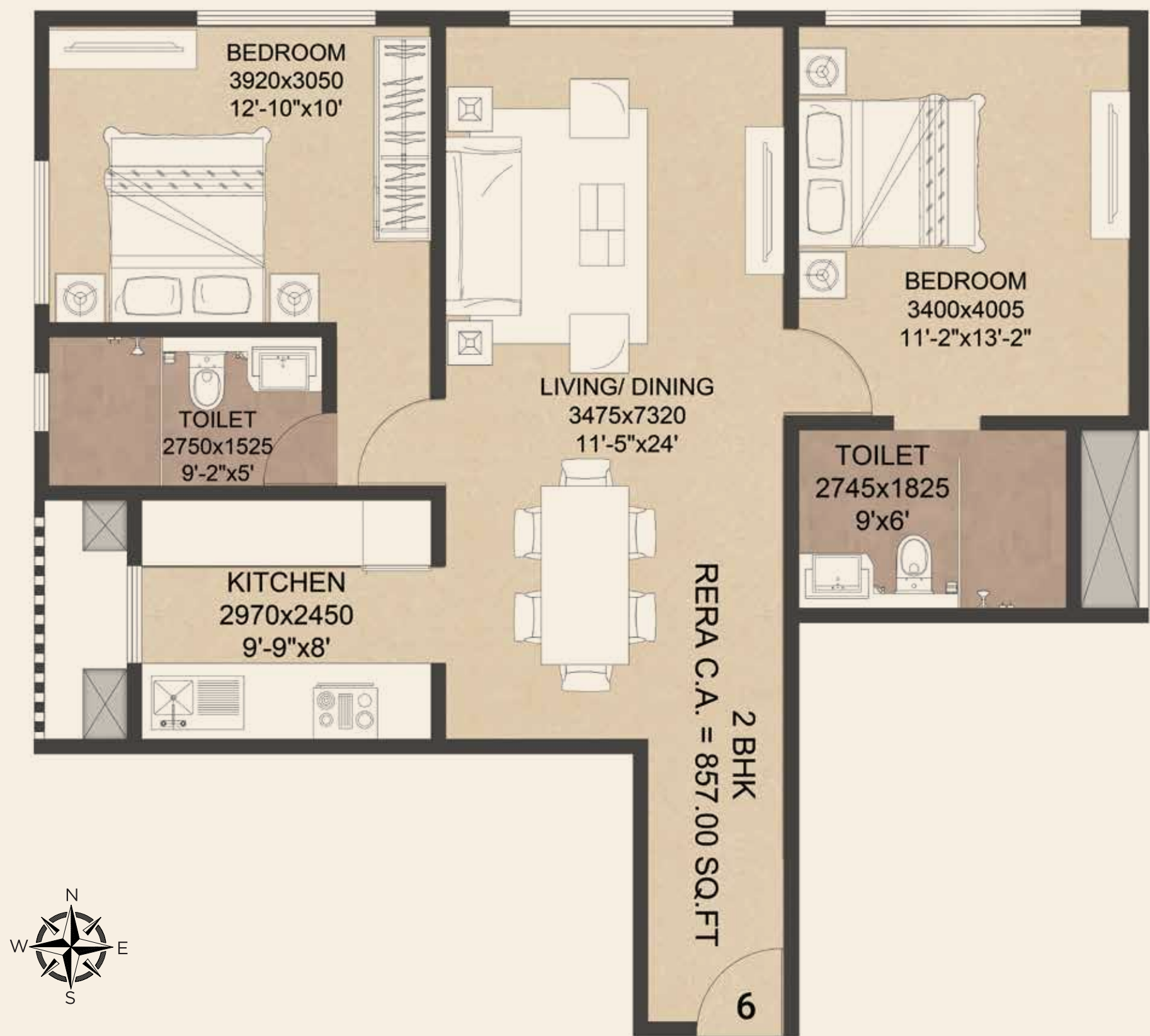


FLAT NO.	USE OF FLAT	RERA CARPET AREA	BALCONY AREA	TOTAL AREA IN SQ.FT.
5	2 BHK	772.00	0.00	772.00



2BHK

857 SQ.FT



FLAT NO.	USE OF FLAT	RERA CARPET AREA	BALCONY AREA	TOTAL AREA IN SQ.FT.
6	2 BHK	857.00	0.00	857.00



2BHK

910 SQ.FT



FLAT NO.	USE OF FLAT	RERA CARPET AREA	BALCONY AREA	TOTAL AREA IN SQ.FT.
4	2 BHK	872.42	37.67	910.09



3BHK

1162 SQ.FT



FLAT NO.	USE OF FLAT	RERA CARPET AREA	BALCONY AREA	TOTAL AREA IN SQ.FT.
4	3 BHK	1124.62	37.67	1162.29